

HAPPY BIRTHDAY

SHUFFLE (HOUSE) ♩ = 130

PETER SAX / BERNHARD WITTGRUBER

WURLI/VOX

Bb

Bb7/Ab

Eb/G

Ebm/Gb

Bb/F

Eb(add9)/F

INTRO

6 Bb

Gm7

Cm7(add11)

F7(SUS4)

REF

10 Bb

Gm7

Cm7(add11)

F7(SUS4)

SIMILE

14 Bb

Gm7

Cm7(add11)

F7(SUS4)

STR

18 Bb

Gm7

Cm7(add11)

F7(SUS4)

HIHAT-SWING

22 Gm

Gb(#5)

Gm7/F

Gm6/E

Ebmaj7

F7(SUS4)

PRE

26 Bb

Gm7

Cm7(add11)

F7(SUS4)

REF

30 Bb

Gm7

Cm7(add11)

F7(SUS4)

34 Bb

Bb7/Ab

Eb/G

Ebm/Gb

Bb/F

F7(SUS4)

40 Bb

Gm7

Cm7(add11)

F7(SUS4)

INTERLUDE

PIANO/VOX ONLY

44 Bb

Gm7

Cm7(add11)

F7(SUS4)

STR

WHOLE BAND

48 Bb

Gm7

Cm7(add11)

F7(SUS4)

HAPPY BIRTHDAY

HIHAT-SWING

Gm

Gb(♯5)

Gm7/F

Gm6/E

Ebmaj7

F7(SUS4)

PRE



56

Bb

Gm7

Cm7(add11)

F7(SUS4)

REF



60

Bb

Gm7

Cm7(add11)

F7(SUS4)



64

Bb

Bb7/Ab

Eb/G

Ebm/Gb

Bb/F

F7(SUS4)



HIHAT-SWING

Gm

Gb(♯5)

Gm7/F

Gm6/E

Ebmaj7

F7(SUS4)

Bb(add9)/F

PRE



SWING (PIANO OFFBEATS)

75

Bb

Gm7

Cm7(add11)

F7(SUS4)

REF



79

Bb

Gm7

Cm7(add11)

F7(SUS4)



83

Bb

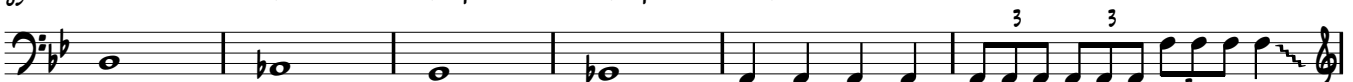
Bb7/Ab

Eb/G

Ebm/Gb

Bb/F

F7(SUS4)



89

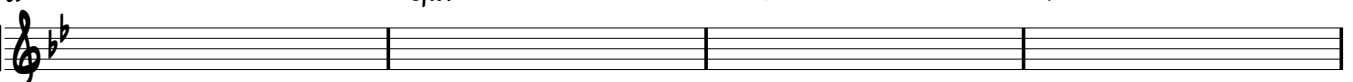
Bb

Gm7

Cm7(add11)

F7(SUS4)

REF



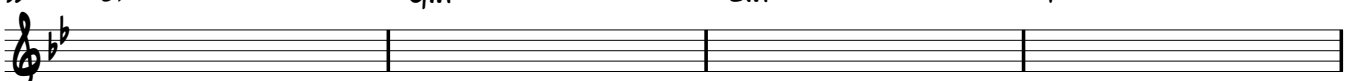
93

Bb

Gm7

Cm7(add11)

F7(SUS4)



97

Bb

Bb7/Ab

Eb/G

Ebm/Gb

Bb/F

F7(SUS4)



103

Bb

Bb7/Ab

Eb/G

Ebm/Gb

Bb/F

F7(SUS4)

Bb

OUTRO

